



QUICK INSTRUCTIONS

Lego® Ghostbusters™ Headquarter

!Recommendation: only for experienced Lego builders!

1. Download & Install Lego Digital Designer: <http://ldd.lego.com>
2. Load the LDD File: ghostbusters-hq_v2.lxf



3. Generate instructions in LDD (html), or work with the step by step instructions from LDD. Maybe you have to divide it into 3 steps. **It's best to isolated one floor and build it and then the next one.**

4. Get the Lego Parts

To get the parts you need an account at BrickLink (www.bricklink.com)

Step 1

Create a Wanted List at BrickLink. This is typically a 6 digit number (e.g. 568562). Write this number down for step two (or copy it with Ctrl-C).

Step 2

Open the included File: bricklink-partlist.txt

Now you must replace my Number „487328“ with your 6 digit number. There are many text programs with the function “find and replace text”...

Step 3

After replacing the number, copy the entire text content of the file and go to:

<http://www.bricklink.com/wantedXML.asp>

Step 4

Insert the text in the field and add it to the wanted list

Note: Decorated Parts must be added manually! (Tiles & Slopes - the Monitors at the lab) The list was created with LDD Manager, I do not guarantee for the accuracy of the list.

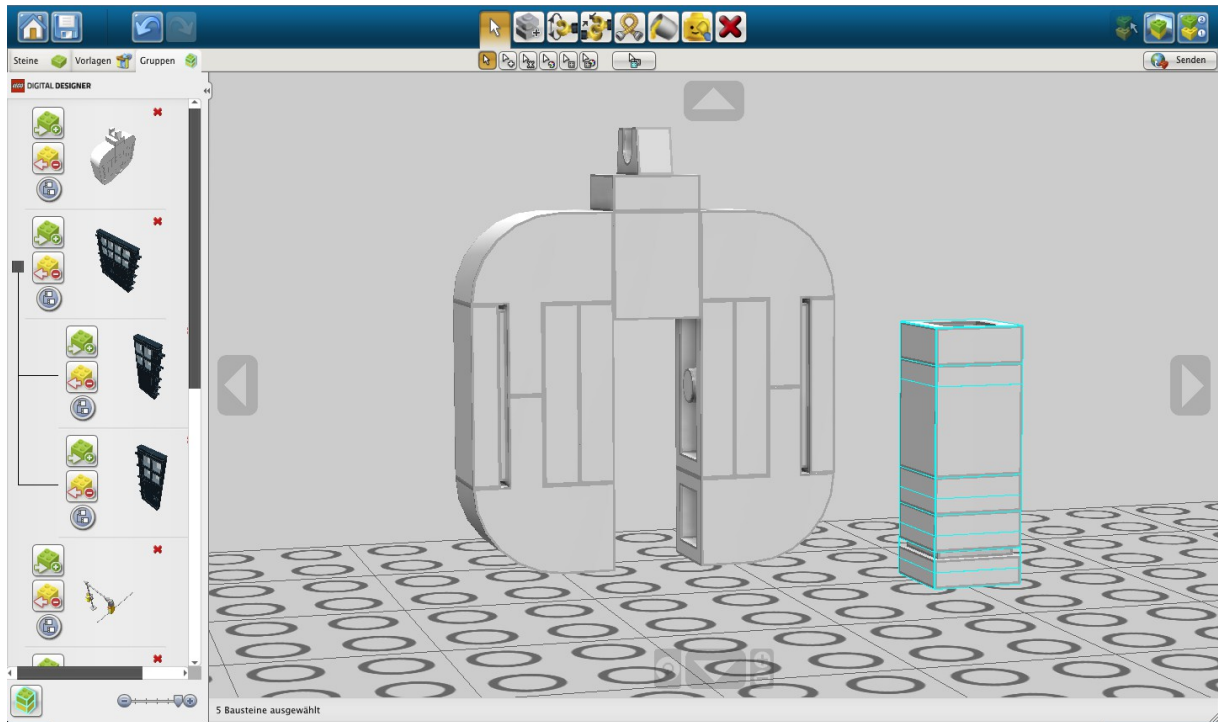
Now you are ready to get the parts from the big shop list. that takes a lot of patience, and there are various methods. But is fun and can be addictive ;)...

5. Have fun building the HQ ;) Some infos & remarks:

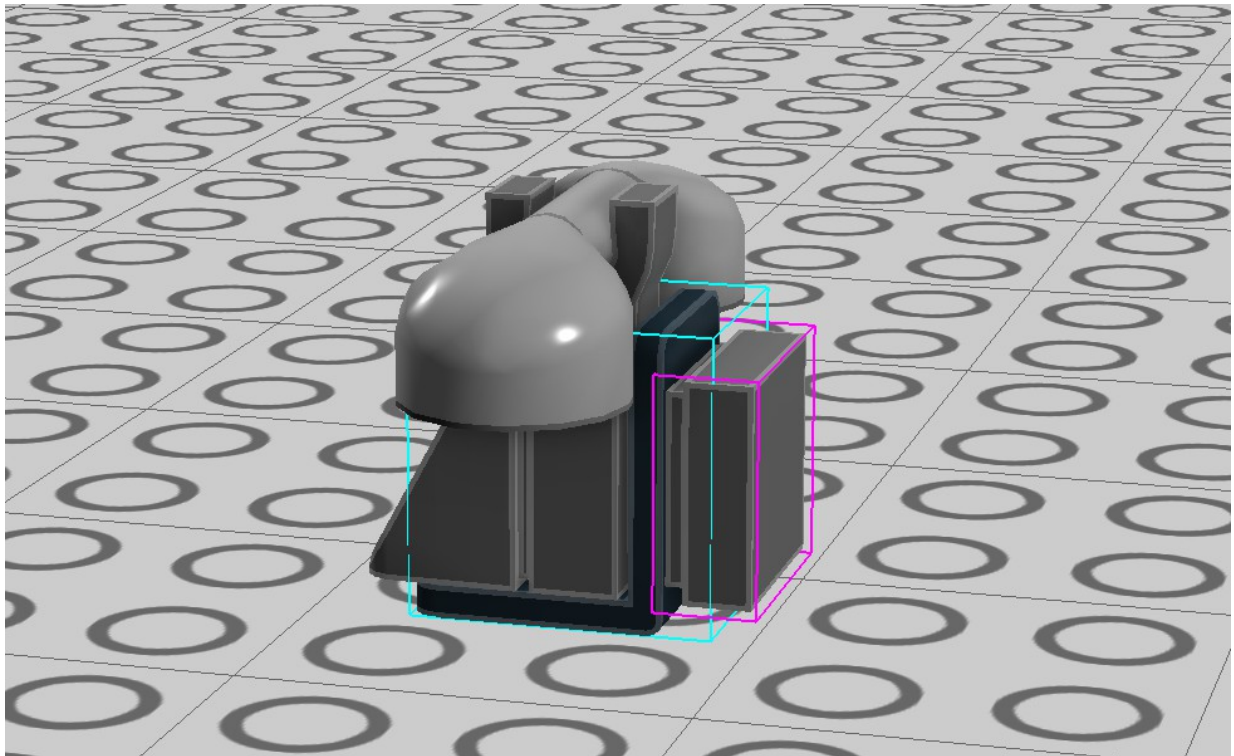
- Front Door: The front door opens only inward. Correctly they should open outwards. Therefore the front opening should be enlarged but does not look nice. The good news: Ecto-1 fits through the doors on this version of the HQ.



- **Ghostbusters Sign:** This is a part that has to be glued. There are also alternative construction.



Telephone: This is a part that has to be glued. There are also alternative construction.



- Floors:

The level floors are really hard to build, do not use too big plates.

I recommend, if necessary, order some additional parts for the stability of the floors. Maybe the floor bends, so you can reinforce it.

- Pole hole railing:

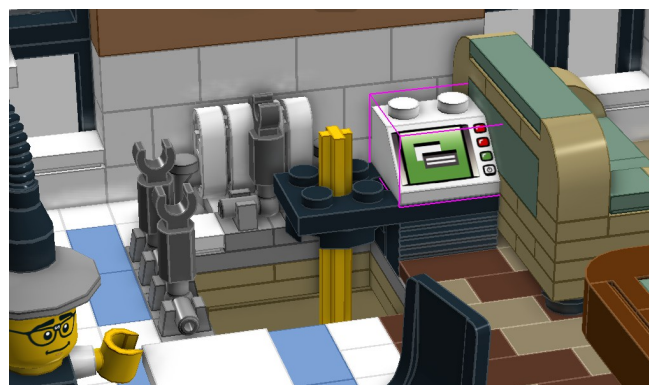
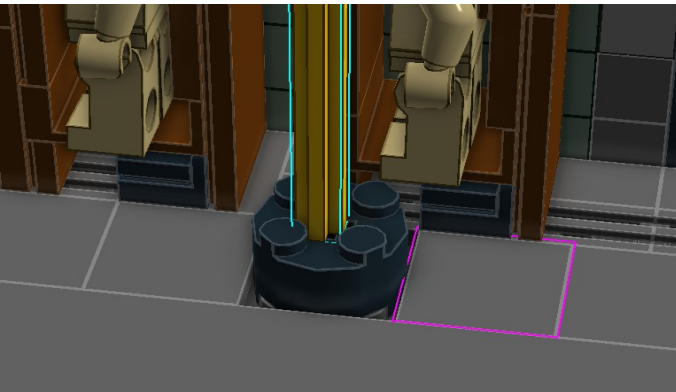
Here you must mount a plastic rod something flexible. Like this one (in black or grey):

<http://www.bricklink.com/catalogItem.asp?P=75c18>



- Pole:

The Pole fits perfectly, you have to push it in the other parts. Unfortunately it does not work in LDD. That's why I had to leave it at that. In the upper part you can attach a cover-part.



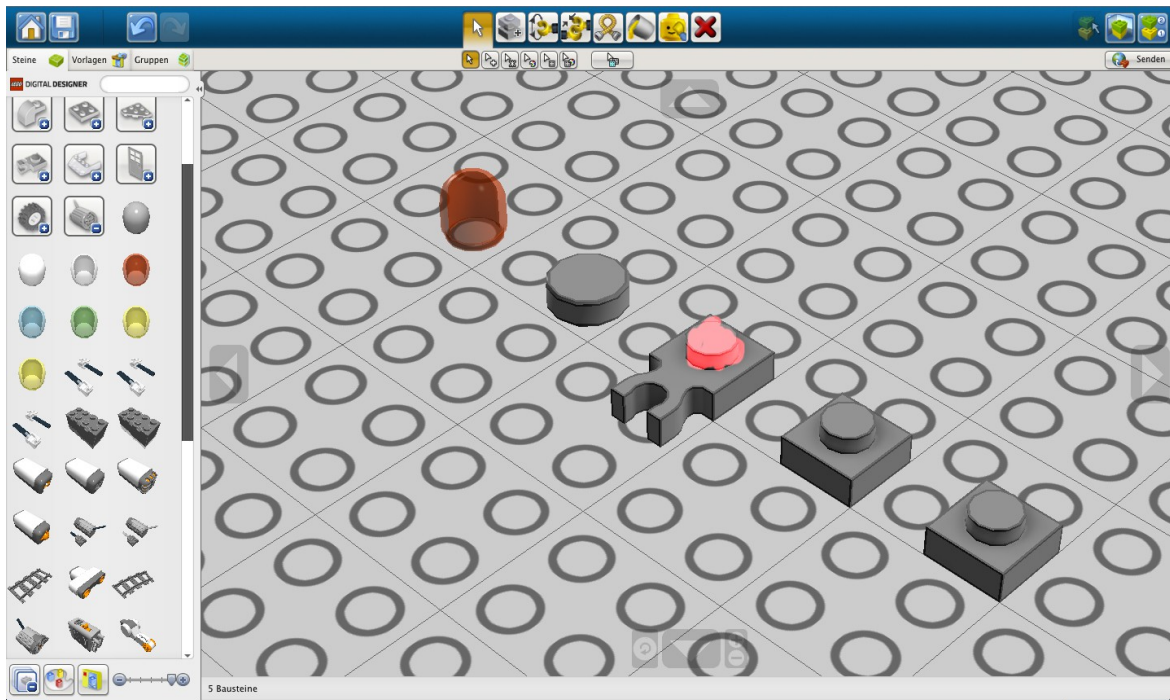
- **Suits (Cabines):** Order the No-Ghost Logo arms at: <http://www.nacm-customs.com/21108-ghostbustersarm-patch/>



- **Lights:** I have put two lego lights in front, these are temporary, if you don't want to build a complex light system.



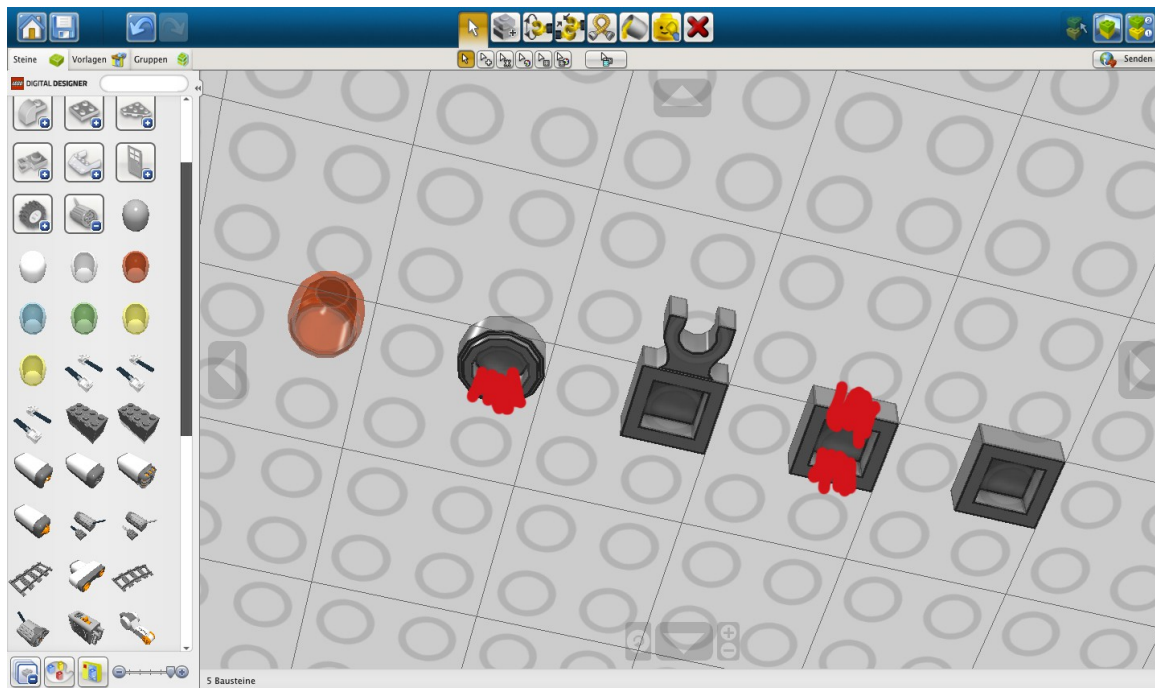
6. Light System - The following parts are required



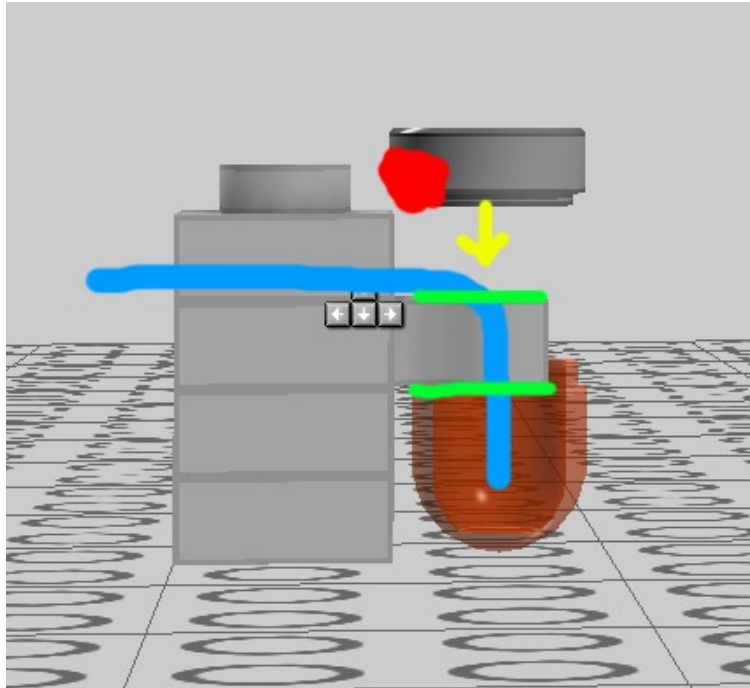
Get the „eLite Jr. Signature Kit“ from <http://lifelites.com/products/list/1>
Mounting is a bit tricky, I recommend to attach the parts with hot glue.

The Lego Parts:

 The red marked points, must be removed, the best method is to file down or cut it.



7. Glue the Parts



- The red marked points, must be removed, the best method is to file down or cut it.
- Blue is the Cable. Here the cable and the LED comes through.
- Hot Glue positions
- mounted up and glued. to hide the cables.

A few images for better visualization.



8. Donate

If you like this project any donation, whether big or small will be really really appreciated.

This will help to make further improvements and develop the project or do other similar projects. And also the development of the interior is supported with this .

Paypal: https://www.paypal.com/cgi-bin/webscr?cmd=_s-xclick&hosted_button_id=LYU55ER99D2DC

Thank you
Sergio – swissgb.ch

